

**PREMIUM PORTABLES**

## the luna

30.6sqm | 8.5 x 3.6m  
version 2

### Standard Inclusions

- + Open plan double bedroom with living and dining areas
- + Kitchen with oven & cooktop
- + Seperate combined bathroom & laundry room
  - + 4kw heatpump
  - + Double powerpoints
- + Electric incl. gas califont+ ranch slider
  - + Window in bathroom
  - + 2 x windows in living
    - + Carpet/ vinyl
    - + Roller blinds
- + LED lights in interior & exterior
  - + Smoke detector

*from \$104,990*

### Please Note

that we can make changes to the interior & upgrade certain fixtures & fittings such as; window furnishings, splashbacks, tapware, kitchen appliances, bathroom accessories. This will incur additional costs



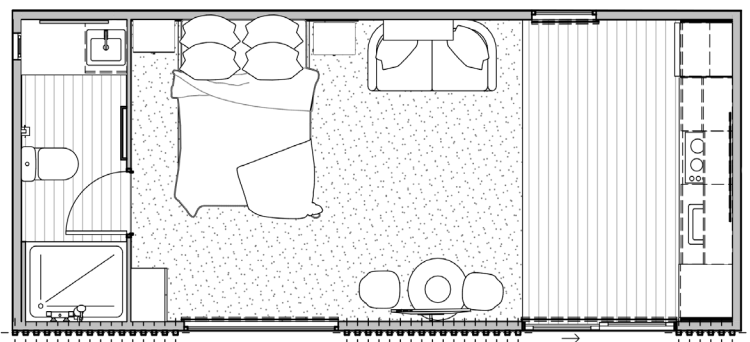
### Interior Colours & Selections

*Our Interior Designer will go through all your fittings choices and guide you through selecting a scheme that is fit for you & how you live.*

*This service is NOT an extra and is included in the building price.*

### Interior Inclusions

- + Kitchen cabinetry colour
- + Kitchen splashback (tiles)
- + Kitchen benchtop colour
  - + Kitchen handles
  - + Kitchen tapware colour
- + Bathroom cabinetry colour
- + Bathroom Splashback (tiles)
- + Bathroom benchtop colour
  - + Bathroom handles
  - + Bathroom tapware colour
- + Bathroom accessories colour
- + Carpet & Vinyl Colours



The Luna - 8.5 x 3.6m  
version 2