

PREMIUM PORTABLES

the santana

45sqm | 12.5x 3.6m
version 2

Standard Inclusions

- + Open plan with living and dining areas
- + Kitchen with oven & cooktop
- + Kitchen Island (extra cost)
- + One double bedroom
- + One single bedroom/ office
- + Separate combined bathroom & laundry room
- + 4kw heatpump
- + Double powerpoints
- + Electric incl. gas califont
- + Ranch slider in Living & Double bedroom
- + 1 x window in bathroom
- + 1 x window in living
- + 1 x window in Kitchen
- + Carpet/ vinyl
- + Roller blinds
- + LED lights in interior & exterior

from \$144,990

Please Note

that we can make changes to the interior & upgrade certain fixtures & fittings such as; window furnishings, splashbacks, tapware, kitchen appliances, bathroom accessories. This will incur additional costs



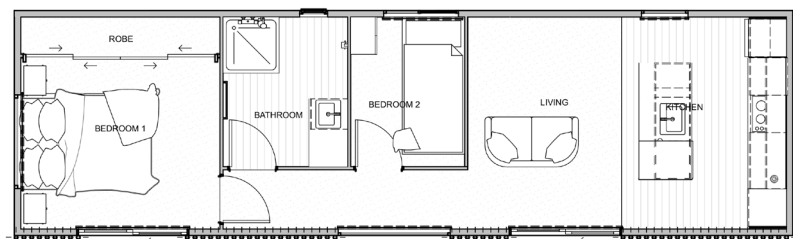
Interior Colours & Selections

Our Interior Designer will go through all your fittings choices and guide you through selecting a scheme that is fit for you & how you live.

This service is NOT an extra and is included in the building price.

Interior Inclusions

- + Kitchen cabinetry colour
- + Kitchen splashback (tiles)
- + Kitchen benchtop colour
- + Kitchen handles
- + Kitchen tapware colour
- + Bathroom cabinetry colour
- + Bathroom Splashback (tiles)
- + Bathroom benchtop colour
- + Bathroom handles
- + Bathroom tapware colour
- + Bathroom accessories colour
- + Carpet & Vinyl Colours



The Santana - 12.5 x 3.6m
version 2