



premium portables

transportable homes brochure



what you can use a transportable building for

the uses for our buildings are endless, whether its for commercial use or residential dwellings, these buildings are perfect for anything.. a few examples below



airbnb

air bnb



office



boutique
accomodation



first home
buyer



minor dwelling



temporary living
while building



holiday park
accomodation

the luna

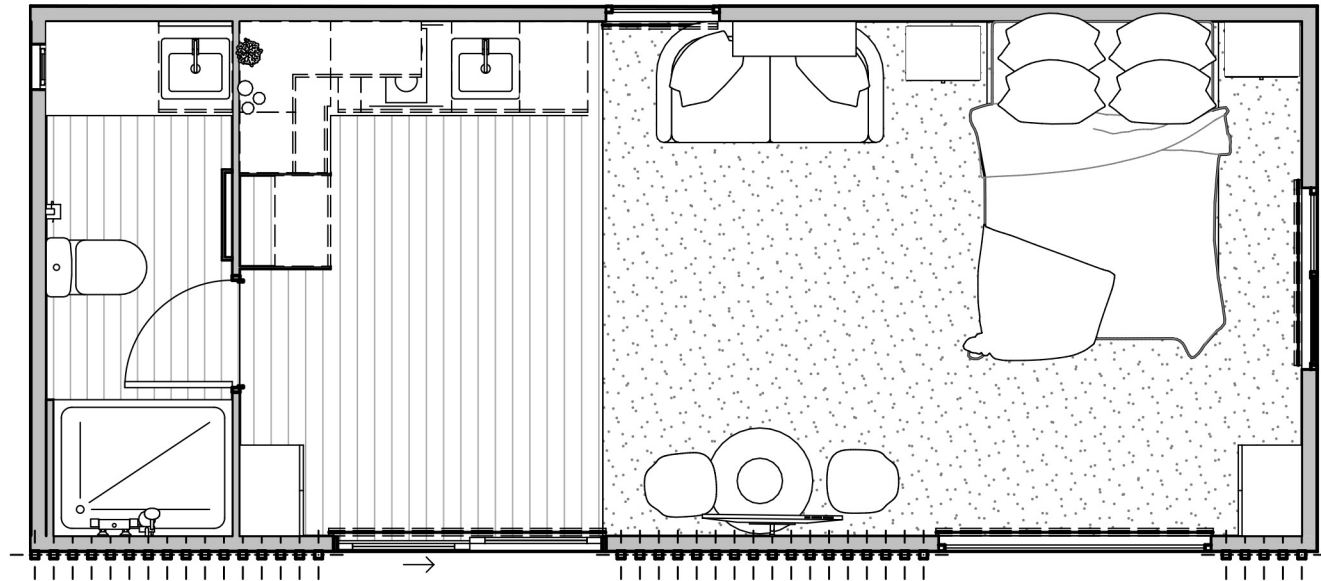
30.6sqm | 8.5 x 3.6m

version 1



standard inclusions:

- open plan bedroom/ living/ dining
- kitchen
- bathroom & laundry
- electric incl. gas califont
- 4kw heatpump
- ranch slider
- window in bathroom
- 3 x windows in living
- double powerpoints throughout
- carpet/ vinyl
- LED lights in interior & exterior
- smoke detector
- customisable colours
- free consultation with our interior designer



from **\$114,990** incl GST

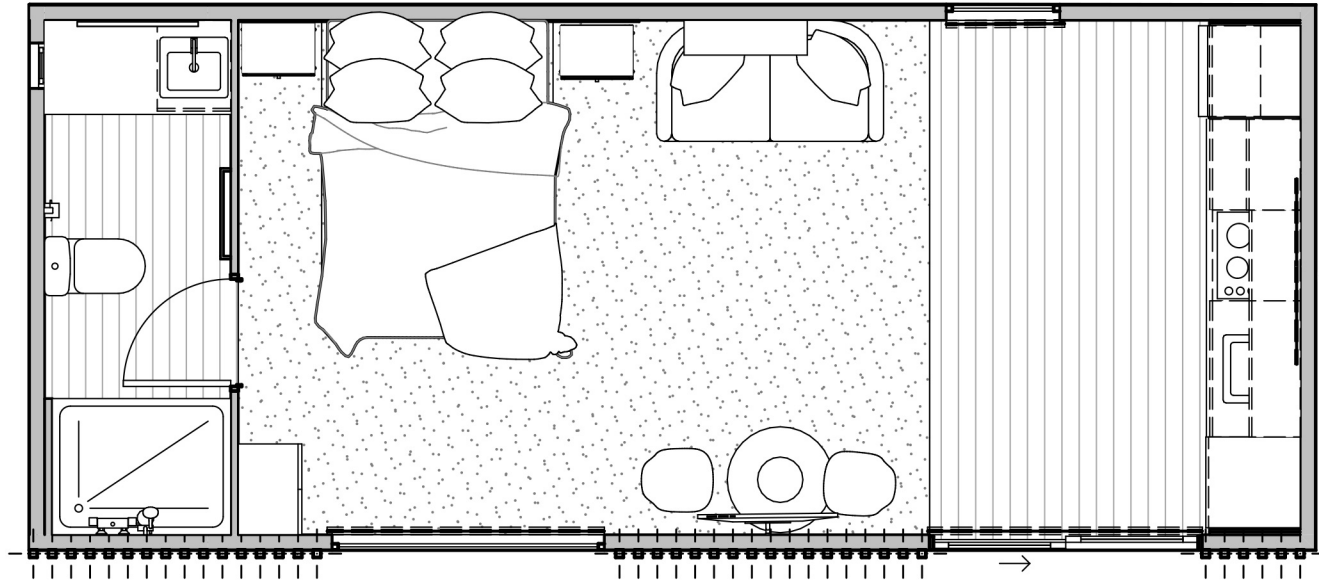
the luna

30.6sqm | 8.5 x 3.6m
version 2



standard inclusions:

- open plan bedroom, living/
dining
- kitchen
- bathroom & laundry
- electric incl. gas califont
- 4kw heatpump
- ranch slider
- window in bathroom
- 2 x windows in living
- double powerpoints throughout
- carpet/ vinyl
- LED lights in interior & exterior
- smoke detector
- customisable colours
- free consultation with
our interior designer



from **\$114,990** incl GST

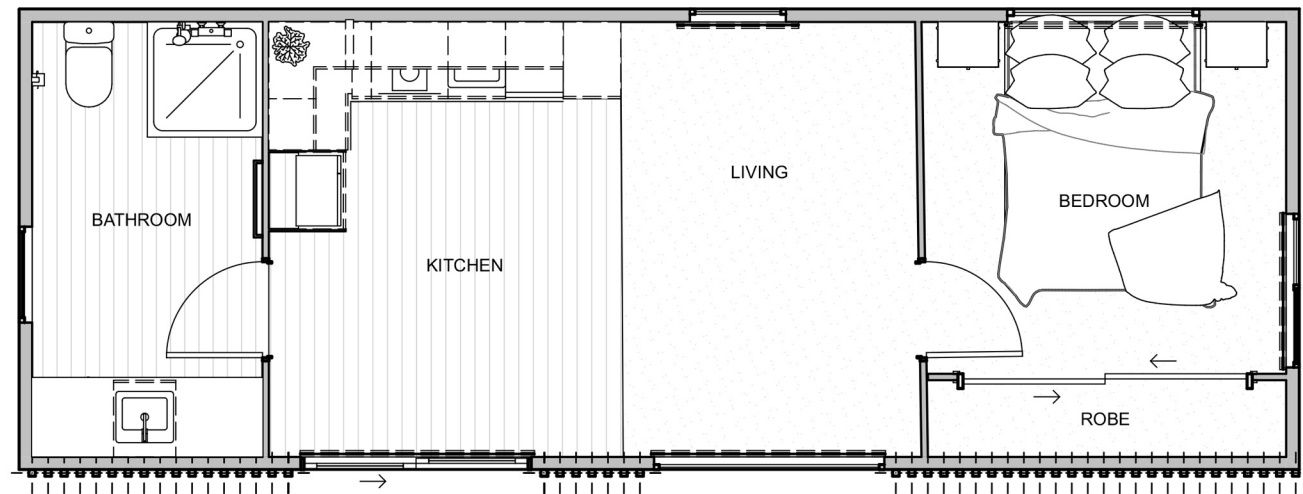
the hugo

36sqm | 10 x 3.6m
version 1



standard inclusions:

- separate double bedroom
- living/ dining
- kitchen
- bathroom & laundry
- electric incl. gas califont
- 4kw heatpump
- ranch slider
- window in bathroom
- 3 x windows in living
- double powerpoints throughout
- carpet/ vinyl
- LED lights in interior & exterior
- smoke detector
- customisable colours
- free consultation with our interior designer



from **\$129,990** incl GST

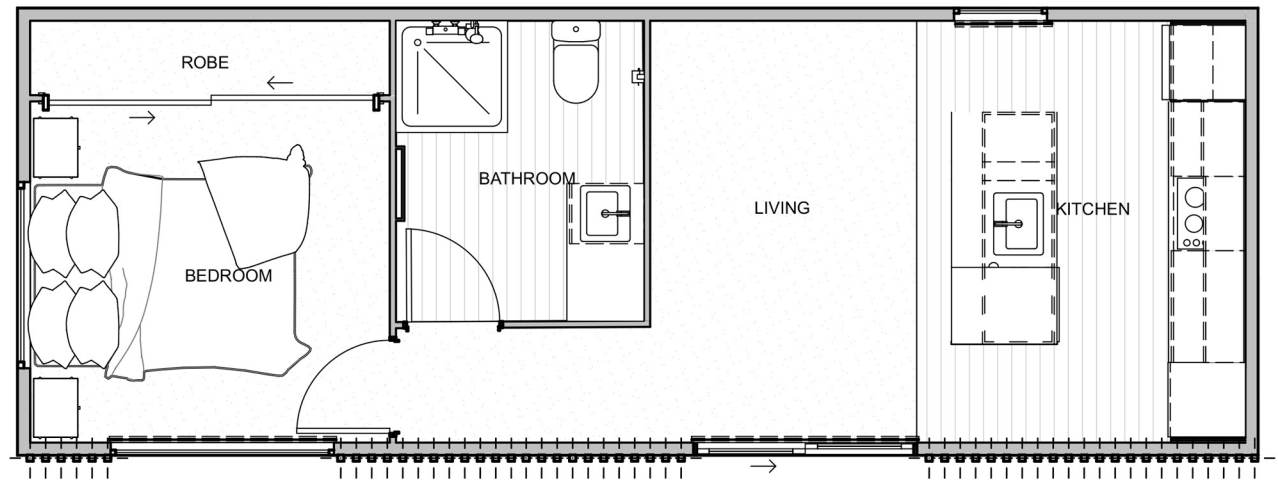
the hugo

36sqm | 10 x 3.6m
version 2



standard inclusions:

- separate double bedroom
- living/ dining
- kitchen
- kitchen island **ADDITIONAL**
- bathroom & laundry
- electric incl. gas califont
- 4kw heatpump
- ranch slider
- window in bathroom
- 1 x window in living
- 1 x window in bedroom
- double powerpoints throughout
- carpet/ vinyl
- LED lights in interior & exterior
- smoke detector
- customisable colours
- free consultation with our interior designer



from **\$129,990** incl GST

the santana

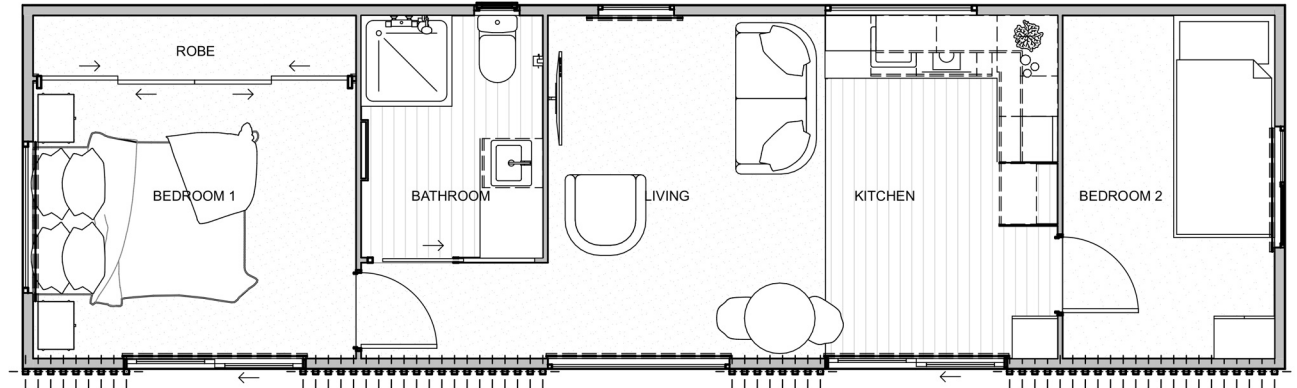
45sqm | 12.5 x 3.6m
version 1



standard inclusions:

- separate double bedroom
- single bedroom
- living/ dining
- kitchen
- bathroom & laundry
- electric incl. gas califont
- 4kw heatpump
- ranch slider
- window in bathroom
- window in kitchen
- window & ranch slider in double bedroom
- 2 x windows in living
- double powerpoints throughout
- carpet/ vinyl
- LED lights in interior & exterior
- smoke detector
- customisable colours
- free consultation with our interior designer

from **\$149,990** incl GST



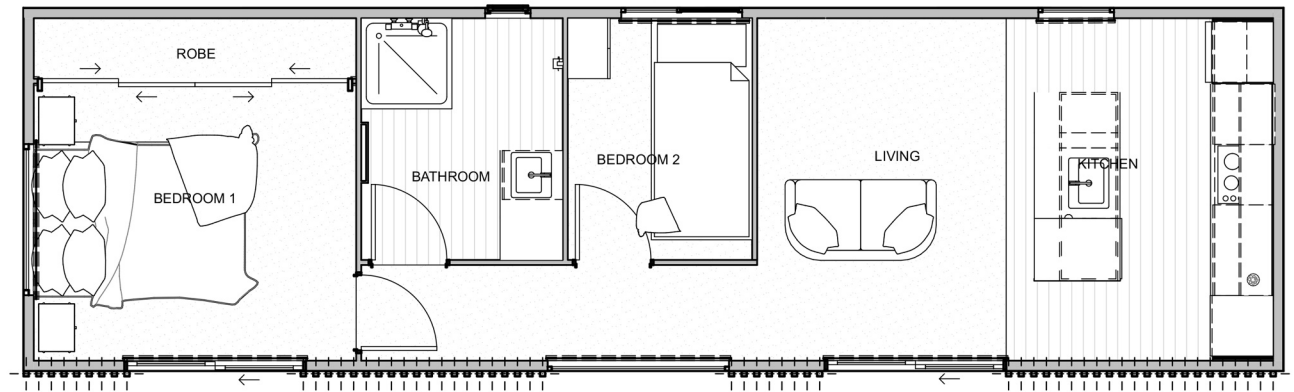
the santana

45sqm | 12.5 x 3.6m
version 2

standard inclusions:

- double bedroom
- single bedroom
- living/ dining
- kitchen
- kitchen island ADDITIONAL
- bathroom & laundry
- electric incl. gas califont
- 4kw heatpump
- ranch slider
- ranch slider & window in double bedroom
- window in bathroom
- 1 x window in living
- 1 x window in kitchen
- double powerpoints throughout
- carpet/ vinyl
- LED lights in interior & exterior
- smoke detector
- customisable colours
- free consultation with

from **\$149,990** incl GST



the elmwood

66.6sqm | 12.5 x 3.6m
+ 6 x 3.6m
version 1



standard inclusions:

- 3 x double bedrooms
- living/ dining
- kitchen
- bathroom & laundry
- electr incl. gas califont
- 4kw heatpump
- ranch slider
- window in bathroom
- window & ranch slider in double bedroom
- 2 x windows in living
- double powerpoints throughout
- carpet/ vinyl
- LED lights in interior & exterior
- smoke detector
- customisable colours
- free consultation with our interior designer

from **\$209,990** incl GST



the elmwood

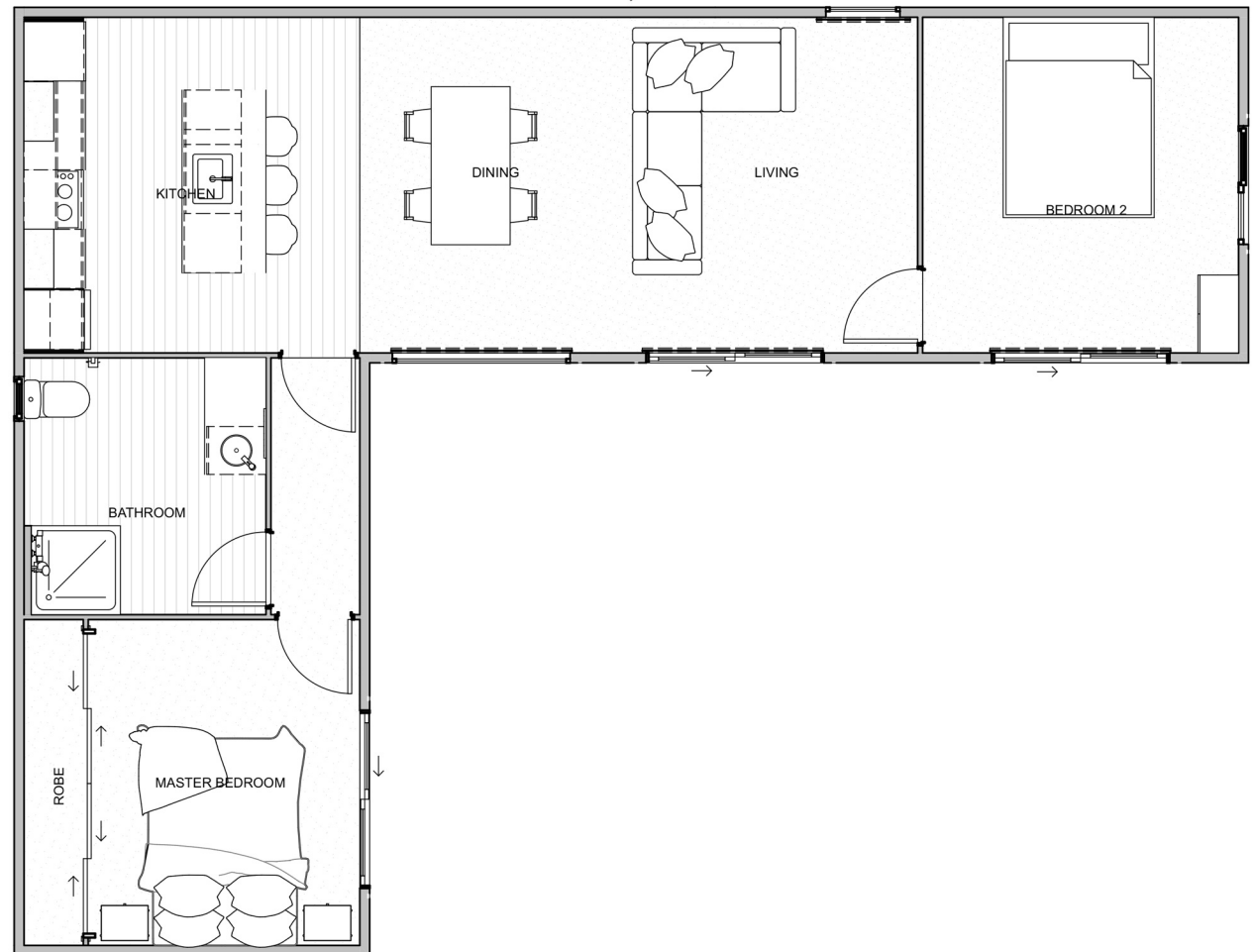
66.6sqm | 12.5 x 3.6m
+ 6 x 3.6m
version 2

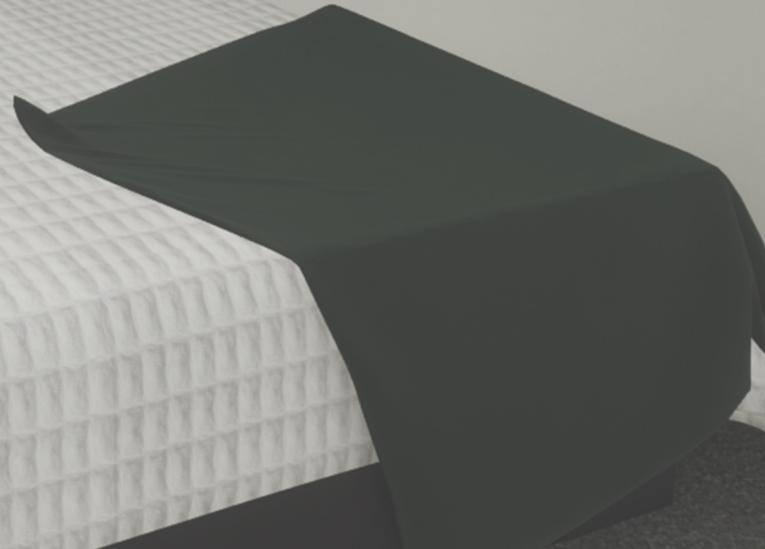
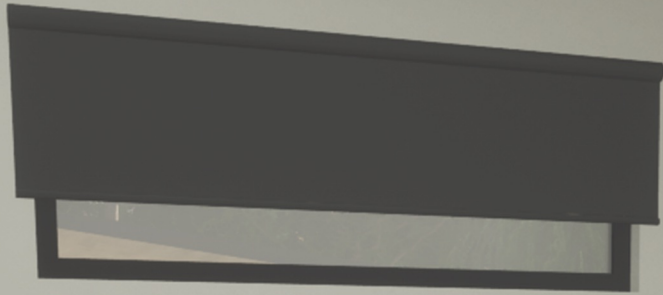


standard inclusions:

- 2 x double bedrooms
- living/ dining
- kitchen
- bathroom & laundry
- electr incl. gas califont
- 4kw heatpump
- ranch slider
- ranch slider in 2 x bedrooms
- window in bathroom
- 2 x windows in living
- double powerpoints throughout
- carpet/ vinyl
- LED lights in interior & exterior
- smoke detector
- customisable colours
- free consultation with our interior designer

from **\$209,990** incl GST





interior & exterior finishings

interior

kitchen

designed by our very own qualified interior designer, ensuring that tiny living doesn't compromise functionality

- Sink
- Oven
- Dishwasher*
- Tapware (brushed brass, black or chrome)
- Range-hood
- Kitchen Island*
- Colour options: dark or light

*at additional cost

bathroom

- Sink
- Enclosed shower
- Tapware (brushed brass, black or chrome)
- BTW toilet
- Accessories (towel rail, toilet roll holder)
- Space in cabinetry for washing machine
- Colour options: dark or light

flooring

- Vinyl in bathroom/ laundry/ kitchen spaces
- Carpet in bedrooms & living spaces
- Colour options: dark or light

other

- Coving

exterior

materials

our buildings are made of a combination of PIR (polyisocyanurate) and EPS (Expanded Polystyrene) panel which is the high-performance insulation option you need.

It is a superior product & is great for environmental impact, thermal conductivity, cost effectiveness, & durability.

- Base colour options: Colorsteel Flaxpod, Sandstone Grey, Titania

cladding

- optional inwood cladding, an architectural composite timber cladding system*

*at additional cost

aluminium joinery

- Low E Double glazed windows
- Big windows and sliding doors to maximise the views you may have on your site & they also make the spaces feel larger.
- Colour: Ebony

our process

1. Select

Select your desired home/office, modify it,
seek a cost estimate.

2. Consent

We can send your plans to the local council to gain consent at an additional cost.

3. Build

Our building method allow us to provide you with your home quickly.

4. Receive

An approximate build-to-delivery timeline, 14 – 18 weeks delivered to you on a truck
organised by us or 4 – 6 weeks on wheels without code of compliance.

Additional on site costs to consider:

- On site building consent/ resource consent
 - Site survey if applicable
 - Geotechnical report if applicable
 - Foundations/ screw piling
- Services (Sewer/ stormwater/ power)
 - Decking

why choose us



Looking for a cost-effective housing solution that doesn't compromise on quality? Premium Portables offers transportable homes that are perfect for those who are looking for temporary accommodation, an additional rental income, or a permanent residence. Our homes are built with the highest standards and quality materials to ensure durability and longevity.

With Premium Portables, you can have peace of mind knowing that your home is built to meet the standards of the New Zealand building code. We provide a code of compliance certificate that serves as a legally recognised document proving that your home has been constructed in compliance with the building regulations. So, why settle for less when you can have a premium home that's built to last? Choose Premium Portables **today**

All of our buildings are built to meet H1 regulations & built by licensed building practitioners



Matt Higgs

Founder | Operations
Manager | Sales



**Taylor-jane
Higgs**

Co founder | Senior
Interior designer |
Sales



Brax Higgs

Worksite Good Boy



Alan Banfield

Project Manager



Andrew Grant

Foreman



contactus

www.premiumportables.co.nz
premiumportablesnz@gmail.com
027 630 0328