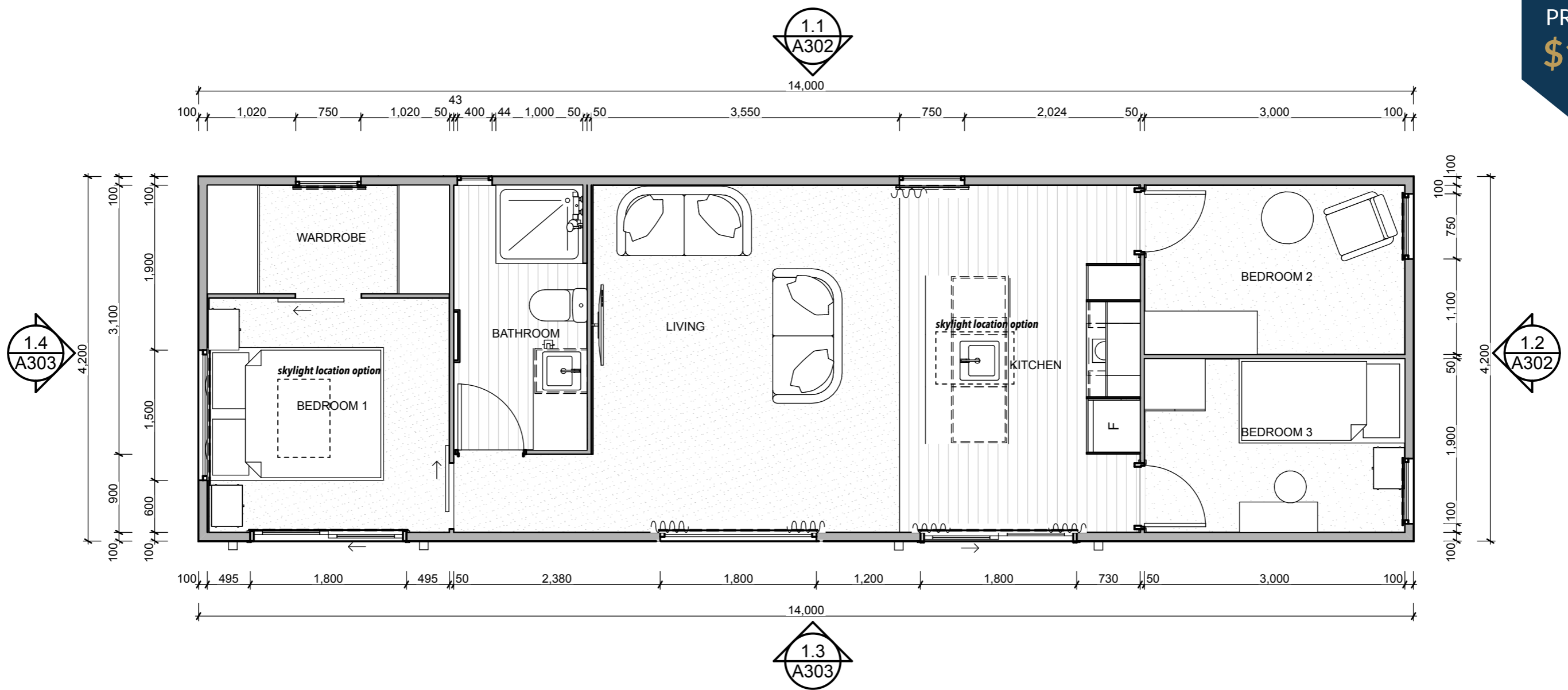


PRICED FROM
\$184,990
 + delivery



THE BELMONT V1

14 x 4.2m² | 58.8m²

3 Bedroom

Bathroom

Kitchen

Wheels Available

PREMIUM PORTABLES

Includes

- Code of Compliance
- Electrical & gas certificates
- 32 amp power socket
- 13x Double powerpoints
- 11x internal LED down lights
- 4x external LED lights
- Fully insulated
- 900 x 900mm shower

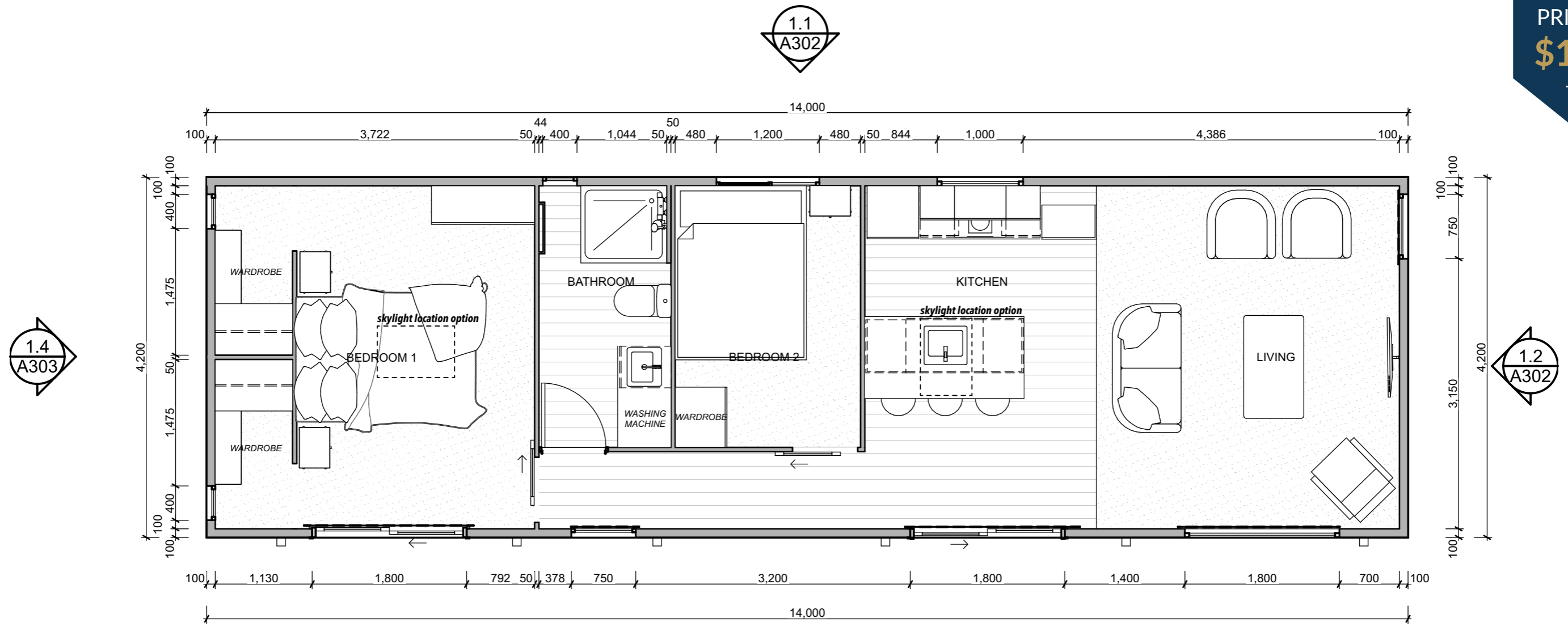
- Gravity-fed plumbing
- Bathroom vanity & extractor fan
- Towel rail & toilet roll holder
- Gas Califont for hot water
- Thermal double glazing
- 4kw Heatpump
- Smoke detectors
- 7x Windows
- 2x Ranch sliders

- Kitchen includes island & pendant
- Bathroom
- Oven
- 2 Burner hob
- In-built range hood
- Large walk-in wardrobe
- 2x 600mm wardrobes
- Carpet/vinyl
- Free design consultation

Additional Extras

- Composite timber cladding
- Trellis
- Skylights
- Wheels/ Drawbar /Stabilisers
- Interior Wallpaper
- Blinds or curtains
- Engineered stone bench top
- Gas hob
- Appliances
- Ventilation system
- Heated towel rails
- Shower dome
- LED mirror

PRICED FROM
\$184,990
 + delivery



1.3
A303



THE BELMONT V2



14 x 4.2m² | 58.8m²



2 Bedroom



Bathroom



Kitchen



Wheels Available



PREMIUM PORTABLES

Includes

- Code of Compliance
- Electrical & gas certificates
- 32 amp power socket
- 13x Double powerpoints
- 12x internal LED down lights
- 4x external LED lights
- Fully insulated
- 900 x 900mm shower

- Gravity-fed plumbing
- Bathroom vanity & extractor fan
- Towel rail & toilet roll holder
- Gas Califont for hot water
- Thermal double glazing
- 4kw Heatpump
- Smoke detectors
- 8x Windows
- 2x Ranch sliders

- Kitchen includes island & pendant
- Bathroom
- Oven
- 2 Burner hob
- In-built range hood
- Large walk-in wardrobe
- 2x 600mm wardrobes
- Carpet/vinyl
- Free design consultation

Additional Extras

- Composite timber cladding
- Trellis
- Skylights
- Wheels/ Drawbar /Stabilisers
- Interior Wallpaper
- Blinds or curtains
- Engineered stone bench top
- Gas hob
- Appliances
- Ventilation system
- Heated towel rails
- Shower dome
- LED mirror