

PRICED FROM
\$229,990
 + delivery



THE ELMWOOD V1

12.5 x 3.6m² + 6 x 3.6 | 66.6m²

3 Bedroom

Bathroom

Kitchen

PREMIUM PORTABLES

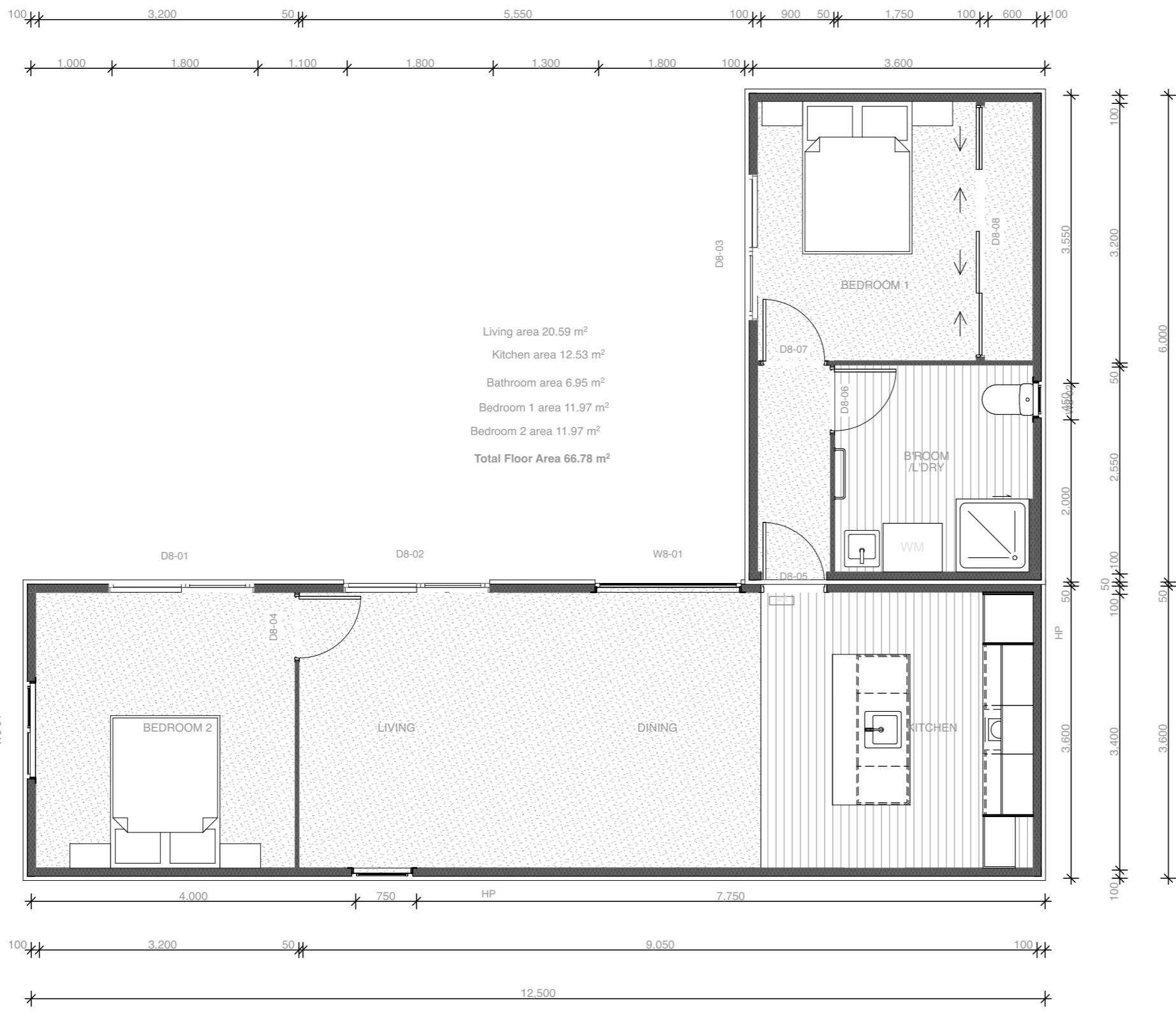
Includes

- Code of Compliance
- Electrical & gas certificates
- 32 amp power socket
- 13x Double powerpoints
- 12x internal LED down lights
- 4x external LED lights
- Fully insulated
- 900 x 900mm shower
- Gravity-fed plumbing
- Bathroom vanity & extractor fan
- Towel rail & toilet roll holder
- Gas Califont for hot water
- Thermal double glazing
- 4kw Heatpump
- Smoke detectors
- 8x Windows
- 3x Ranch sliders
- Kitchen includes island & pendant
- Bathroom
- Oven
- 2 Burner hob
- In-built range hood
- Large floor to ceiling wardrobe
- 2x 600mm wardrobes
- Carpet/vinyl
- Free design consultation

Additional Extras

- Composite timber cladding
- Trellis
- Skylights
- Wheels/ Drawbar /Stabilisers
- Interior Wallpaper
- Blinds or curtains
- Engineered stone bench top
- Gas hob
- Appliances
- Ventilation system
- Heated towel rails
- Shower dome
- LED mirror

PRICED FROM
\$229,990
 + delivery



THE ELMWOOD V2

12.5 x 3.6m² + 6 x 3.6 | 66.6m²

2 Bedroom

Bathroom

Kitchen

PREMIUM PORTABLES

Includes

- Code of Compliance
- Electrical & gas certificates
- 32 amp power socket
- 13x Double powerpoints
- 12x internal LED down lights
- 4x external LED lights
- Fully insulated
- 900 x 900mm shower
- Gravity-fed plumbing
- Bathroom vanity & extractor fan
- Towel rail & toilet roll holder
- Gas Califont for hot water
- Thermal double glazing
- 4kw Heatpump
- Smoke detectors
- 8x Windows
- 3x Ranch sliders
- Kitchen includes island & pendant
- Bathroom
- Oven
- 2 Burner hob
- In-built range hood
- Large floor to ceiling wardrobe
- 2x 600mm wardrobes
- Carpet/vinyl
- Free design consultation

Additional Extras

- Composite timber cladding
- Trellis
- Skylights
- Wheels/ Drawbar /Stabilisers
- Interior Wallpaper
- Blinds or curtains
- Engineered stone bench top
- Gas hob
- Appliances
- Ventilation system
- Heated towel rails
- Shower dome
- LED mirror